

1. Ordena segons toque la mestra.

The image shows six boxes, each containing a sequence of musical notes. The notes are arranged in two columns of three boxes each. The notes in each box are as follows:

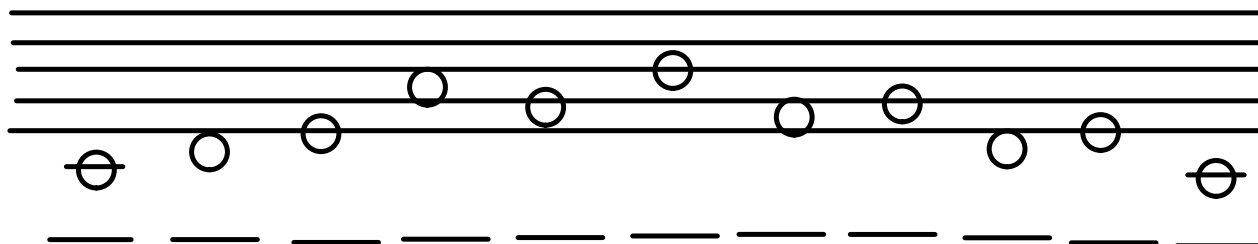
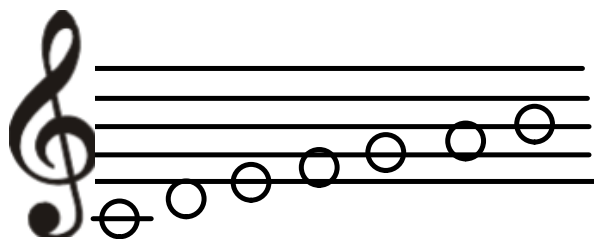
- Box 1 (top left): Quarter note, eighth note, eighth note, quarter note, eighth note, eighth note, quarter note.
- Box 2 (top right): Quarter note, eighth note, eighth note, quarter note, eighth note, eighth note, quarter note.
- Box 3 (middle left): Quarter note, eighth note, eighth note, quarter note, eighth note, eighth note, quarter note.
- Box 4 (middle right): Quarter note, eighth note, eighth note, quarter note, eighth note, eighth note, quarter note.
- Box 5 (bottom left): Quarter note, eighth note, eighth note, quarter note, eighth note, eighth note, quarter note.
- Box 6 (bottom right): Quarter note, eighth note, eighth note, quarter note, eighth note, eighth note, quarter note.

2. Di si són vertaderes o falses les següents oracions:

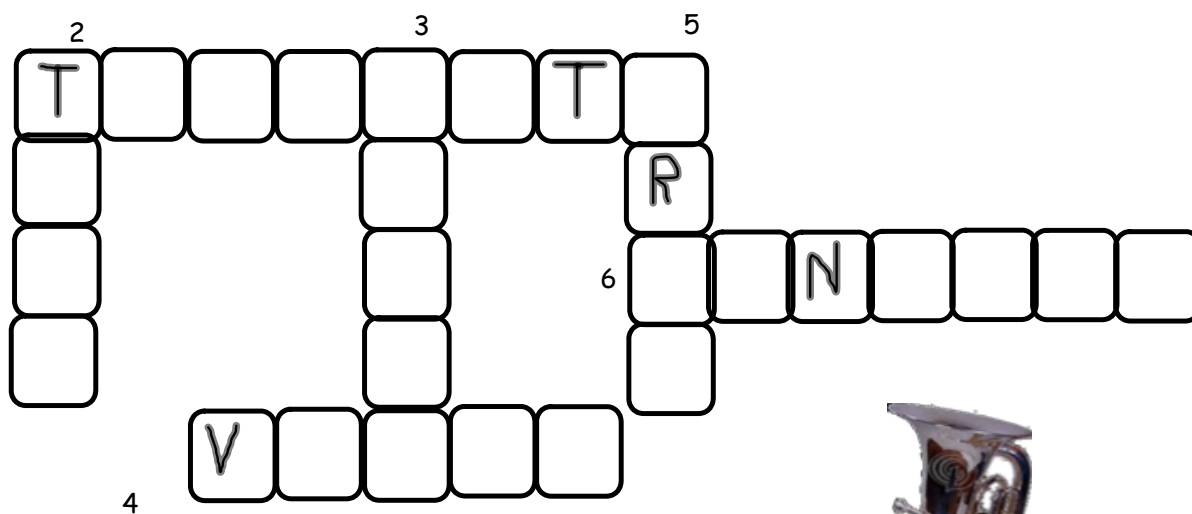
- a) El director/a es col·loca darrere de l'orquestra.
- b) L'orquestra té quatre famílies.
- c) El violí més important de l'orquestra es diu superviolí.
- d) El vent pot ser fusta o metal.
- e) La percussió es col·loca davant de tota l'orquestra.

V F

3. Recorda les notes del pentagrama i escriu el nom de les notes de baix.



4. COMPLETA L'ENCREUAT.



HORIZONTALS

- 1. INSTRUMENT DE VENT
- 4. INSTRUMENT DE CORDA.
- 6. INSTRUMENT DE PERCUSSIÓ.



VERTICALS.

- 2. INSTRUMENT DE VENT METALL MOLT GRAN.
- 3. INSTRUMENT DE CORDA AMB TECLES
- 5. INSTRUMENT DE CORDA.

