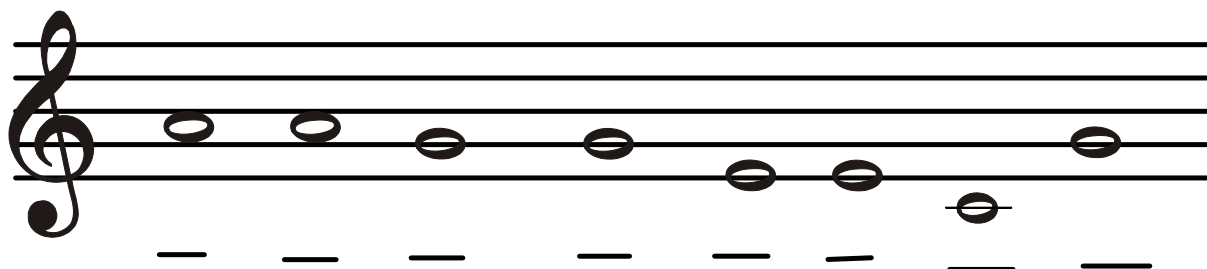
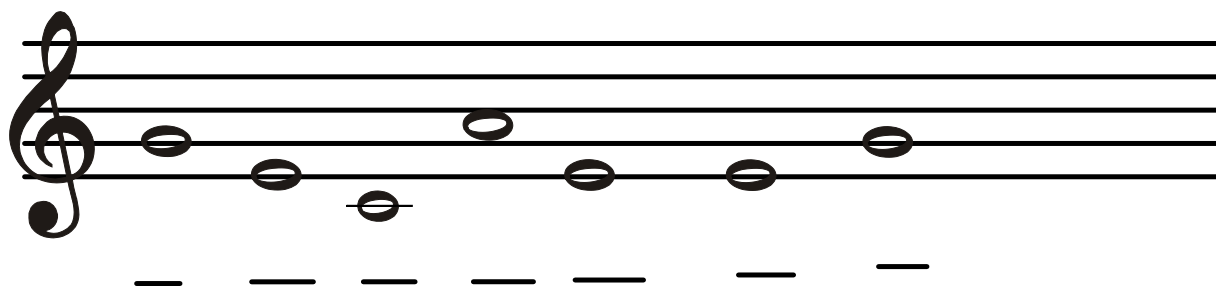
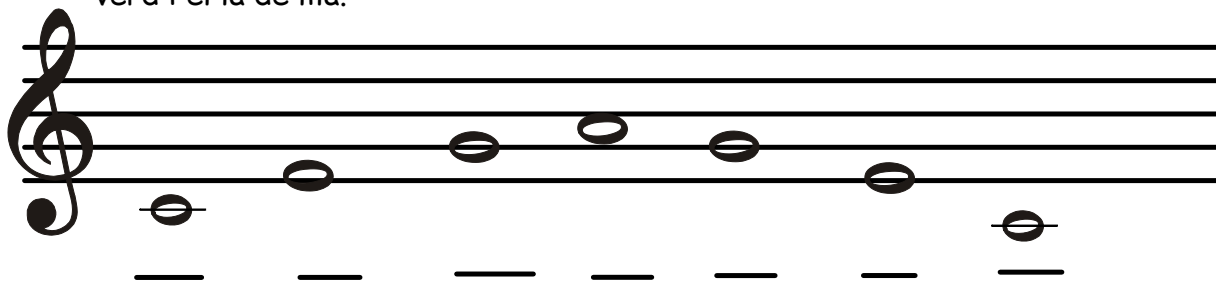


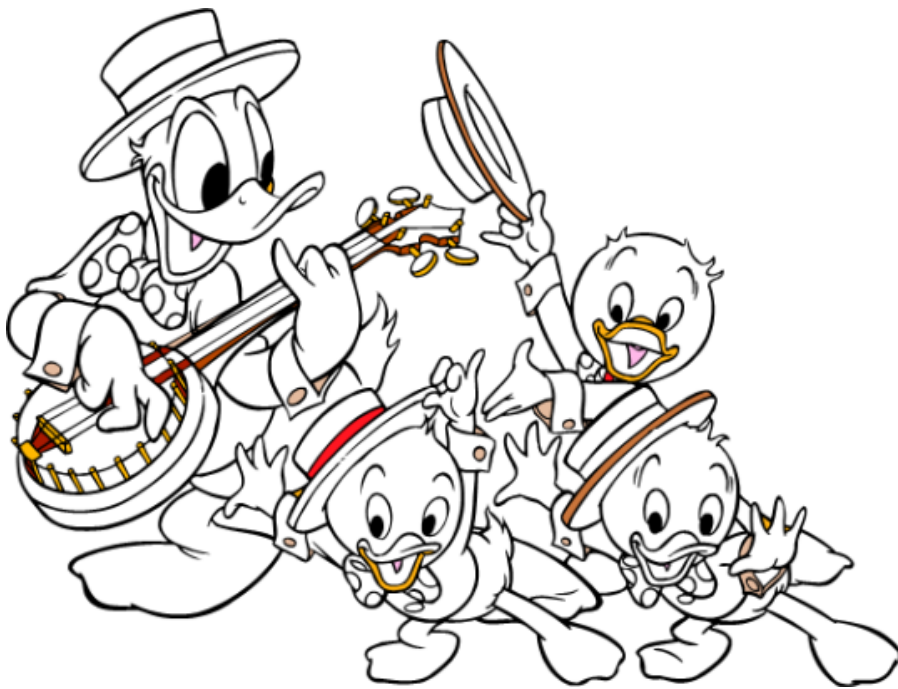
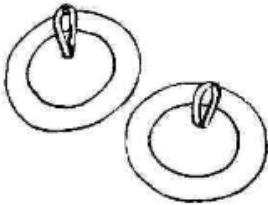
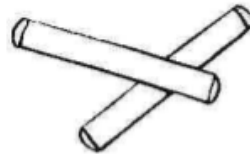
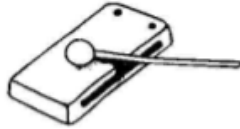
1. Posa el nom a cada nota, després pinta el do de roig, el mi de groc, el sol de verd i el la de lila.



3. Pinta la careta trista si la música sona trista i la contenta si sona alegre.



2. Ordena segons toque la mestra.



Adjuntos

Triángulo.jpg

Caja China.jpg

Claves.jpg

Crótalos.jpg

Pandereta.jpg

Pandero.jpg