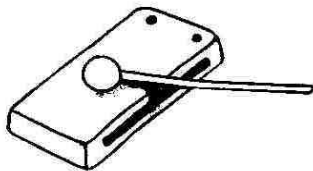
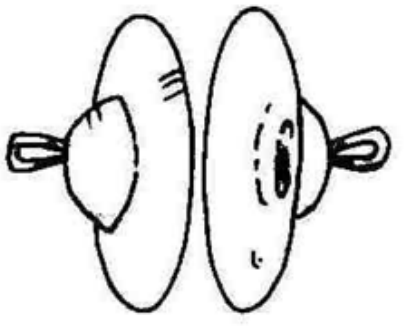
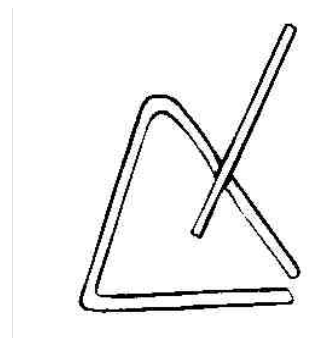
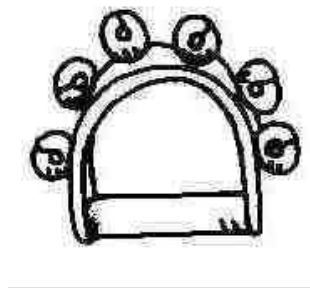
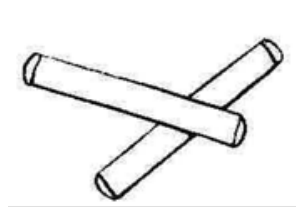
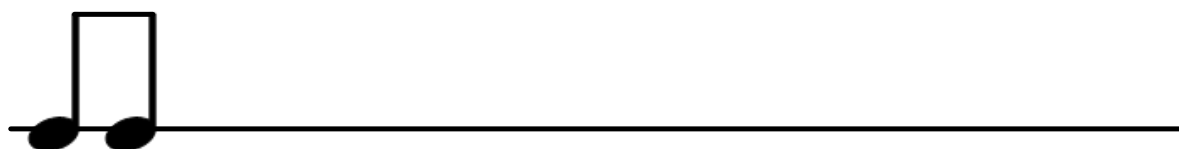


1. Ordena els instruments segons sonen:



2. Escriu les figures:



3. Plena aquesta línia amb les figures que vullgues:



4. Dibuixa un rogle on van les notes:

A musical staff with a treble clef on the left. Below the staff, eight vertical dashed arrows point upwards to the lines of the staff. Below each arrow is a solfège syllable: sol, la, mi, sol, sol, mi, mi, la.

Caja China.jpg