

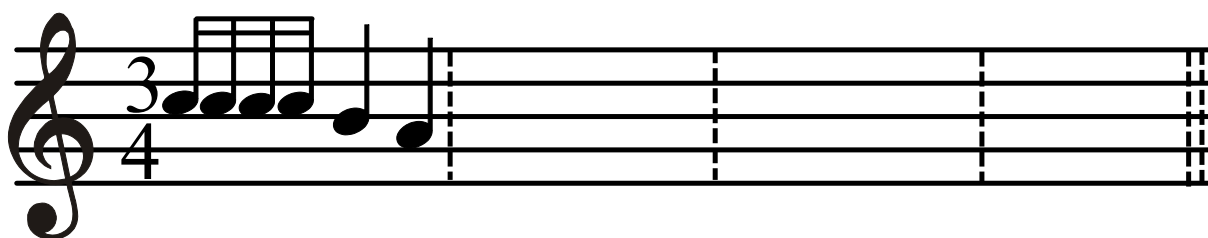
1. Posa el nom a cada nota.


Three musical staves are shown, each with a treble clef. The first staff contains seven whole notes on the lines G, A, B, C, D, E, and F. Below each note is a horizontal dashed line for labeling. The second staff contains seven whole notes on the lines G, A, B, C, D, E, and F. Below each note is a horizontal dashed line for labeling. The third staff contains seven whole notes on the lines G, A, B, C, D, E, and F. Below each note is a horizontal dashed line for labeling.

2. Indica l'ordre en que els interpreta la mestra.

Six boxes containing musical phrases for ordering. Each box contains a sequence of notes and rests. The first box contains a quarter note, an eighth note, a quarter note, a quarter note, a quarter note, and a quarter note. The second box contains a quarter note, a quarter note, a quarter note, a quarter note, a quarter note, and a quarter note. The third box contains a quarter note, a quarter note, a quarter note, a quarter note, a quarter note, and a quarter note. The fourth box contains a quarter note, a quarter note, a quarter note, a quarter note, a quarter note, and a quarter note. The fifth box contains a quarter note, a quarter note, a quarter note, a quarter note, and a quarter note. The sixth box contains a quarter note, a quarter note, a quarter note, a quarter note, and a quarter note.

3. Completa els compasos amb les figures que ompliguen el compàs.



Recorda pots utilitzar:  però has de recordar el seu valor

4. Di si són vertaderes o falses les següents oracions:

a) El director/a es col·loca darrere de l'orquestra.

b) L'orquestra té quatre famílies.

c) El violí més important de l'orquestra es diu superviolí.

d) El vent pot ser fusta o metal.

e) La percussió es col·loca davant de tota l'orquestra.

	V	F
a)		
b)		
c)		
d)		
e)		